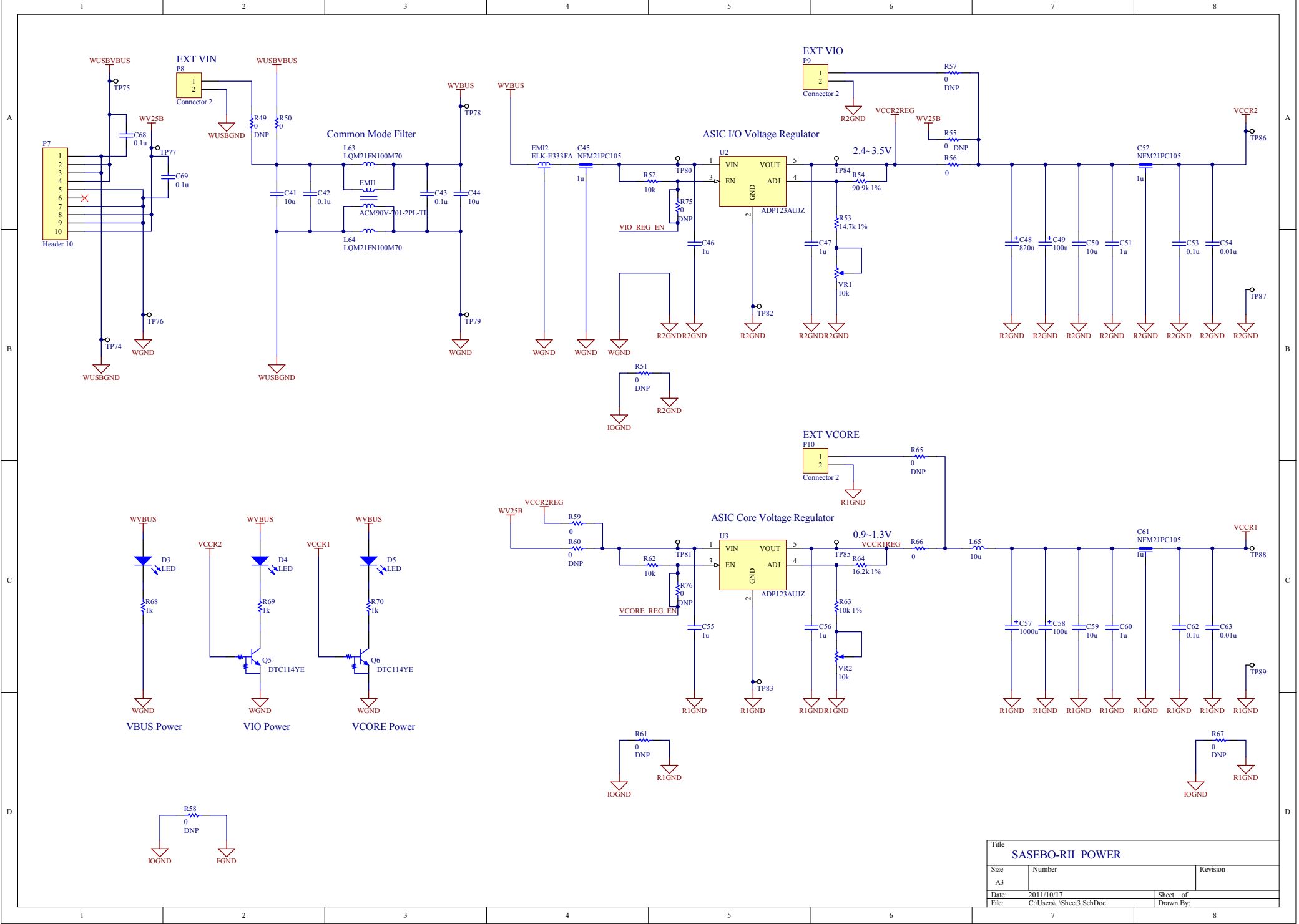
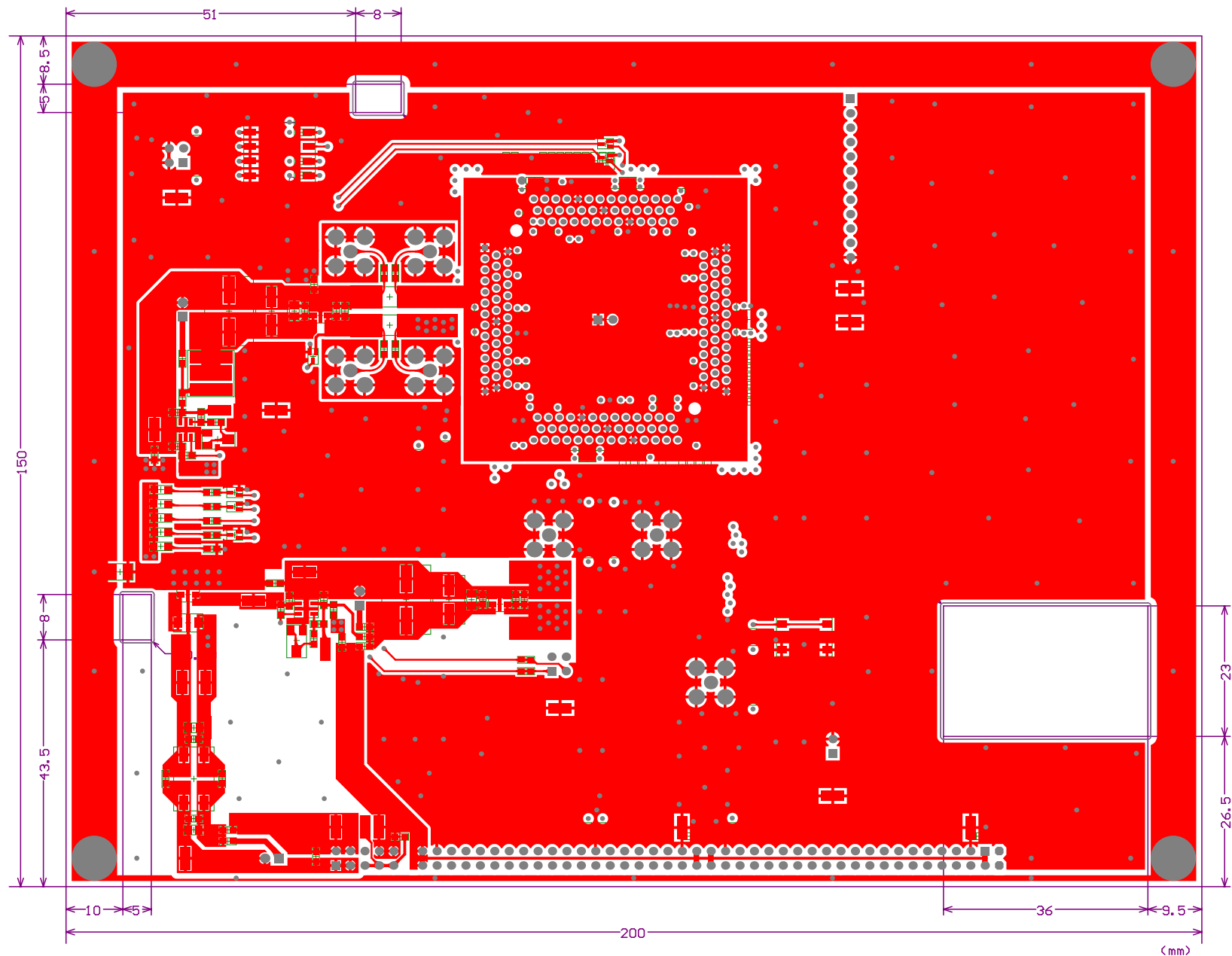


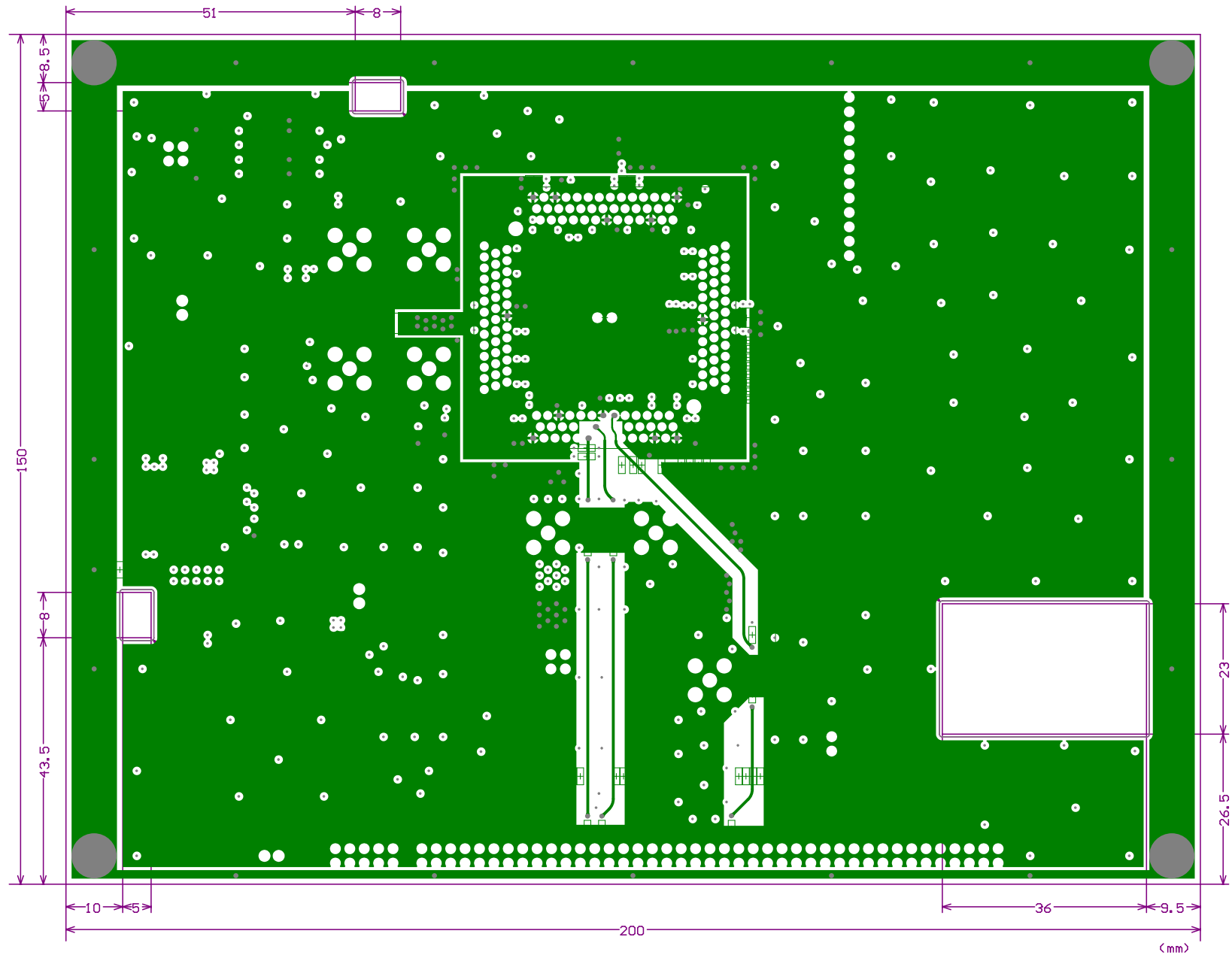
Title		
SASEBO-RII ASIC		
Size	Number	Revision
A3		
Date:	2011/10/17	Sheet of
File:	C:\Users\Sheet2.SchDoc	Drawn By:

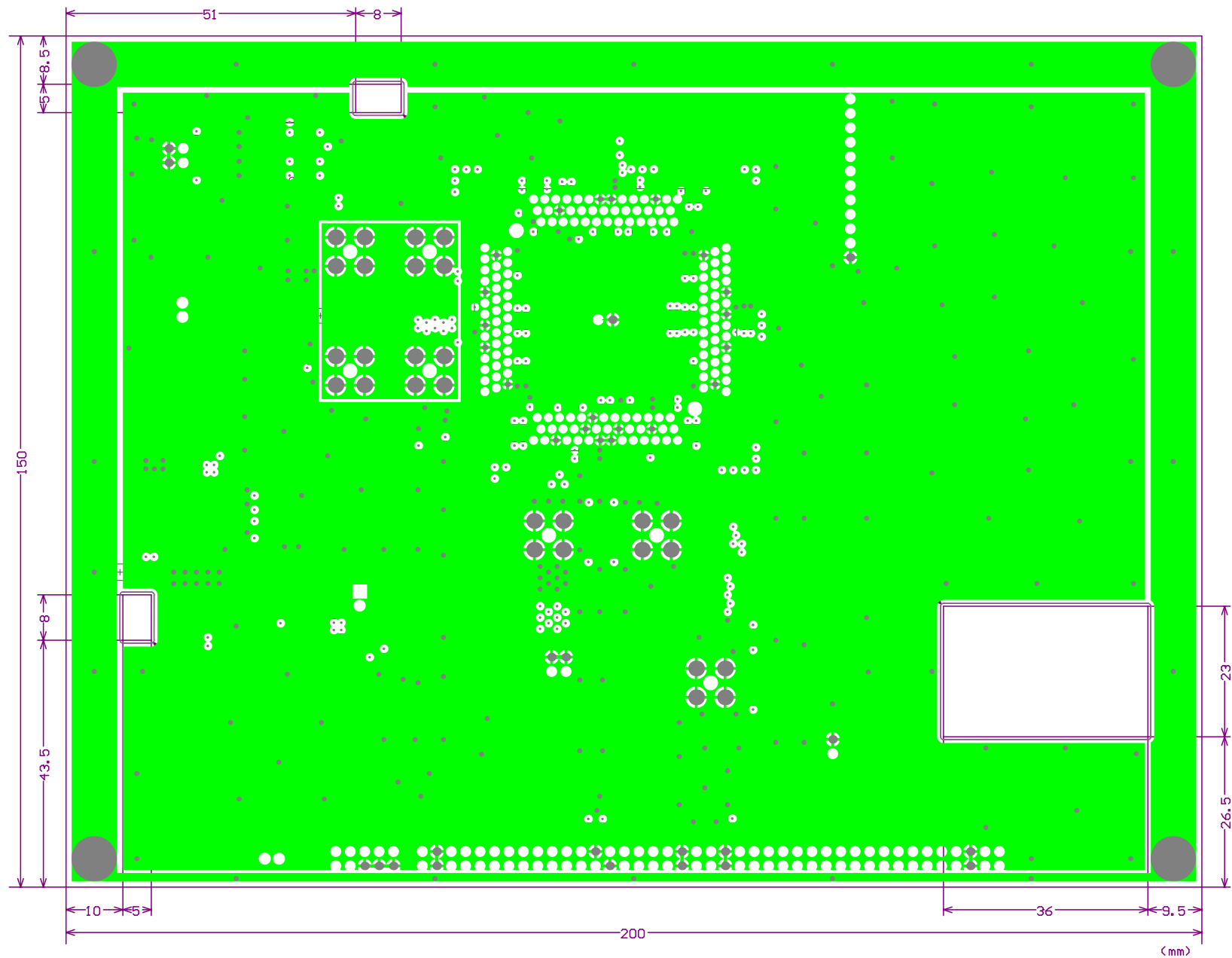


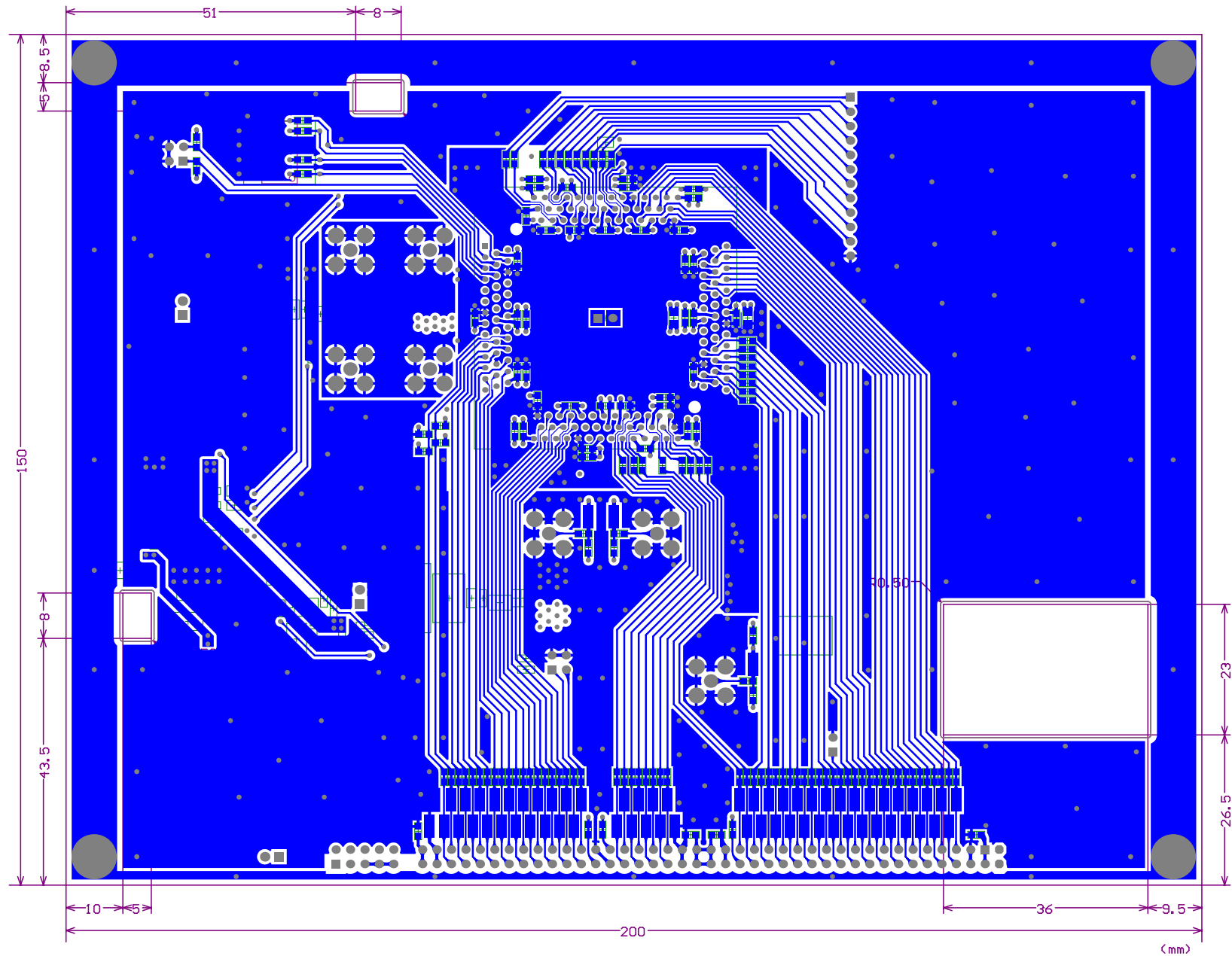
Title		
SASEBO-RII POWER		
Size	Number	Revision
A3		
Date:	2011/10/17	Sheet of
File:	C:\Users\Sheet3.SchDoc	Drawn By:

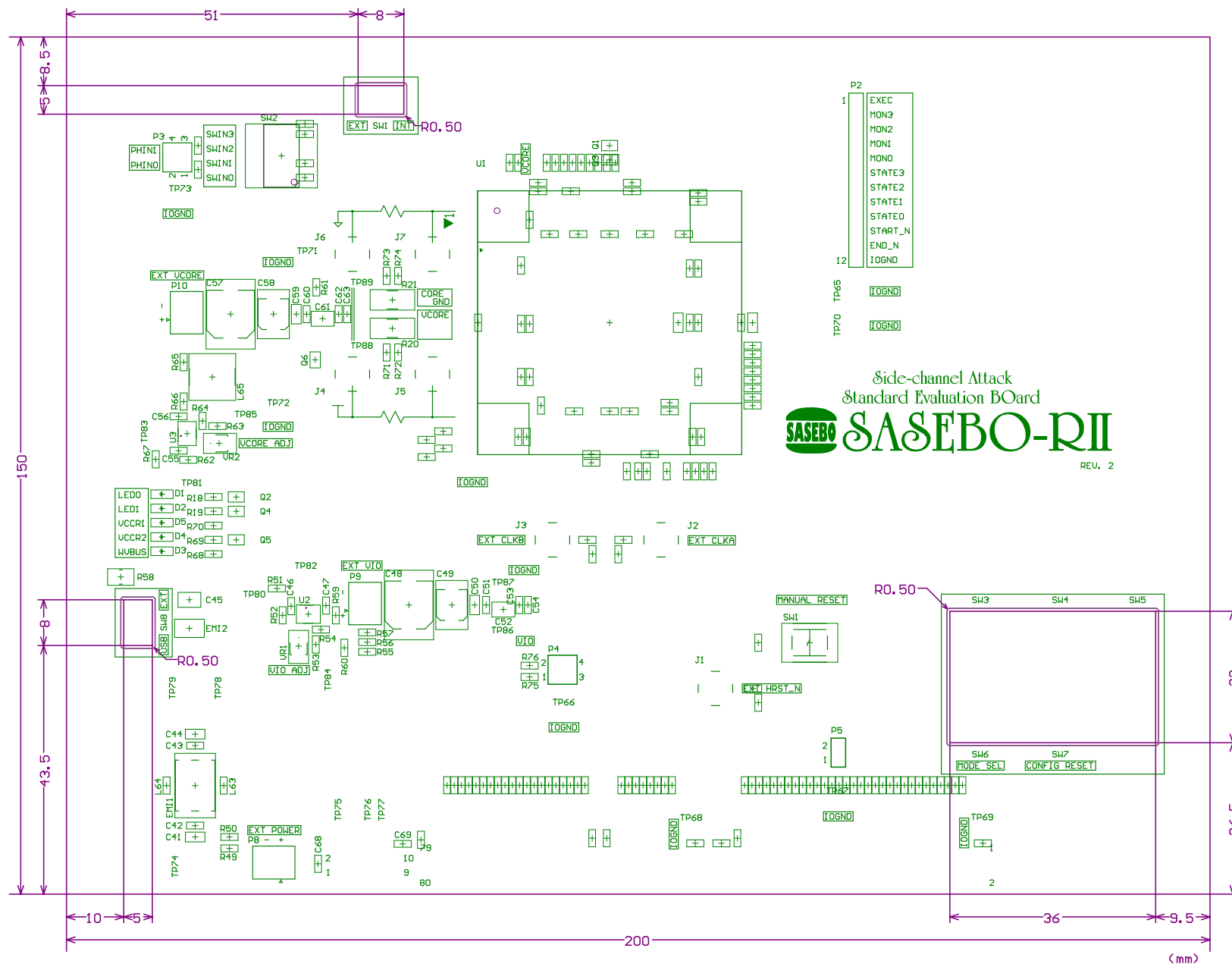


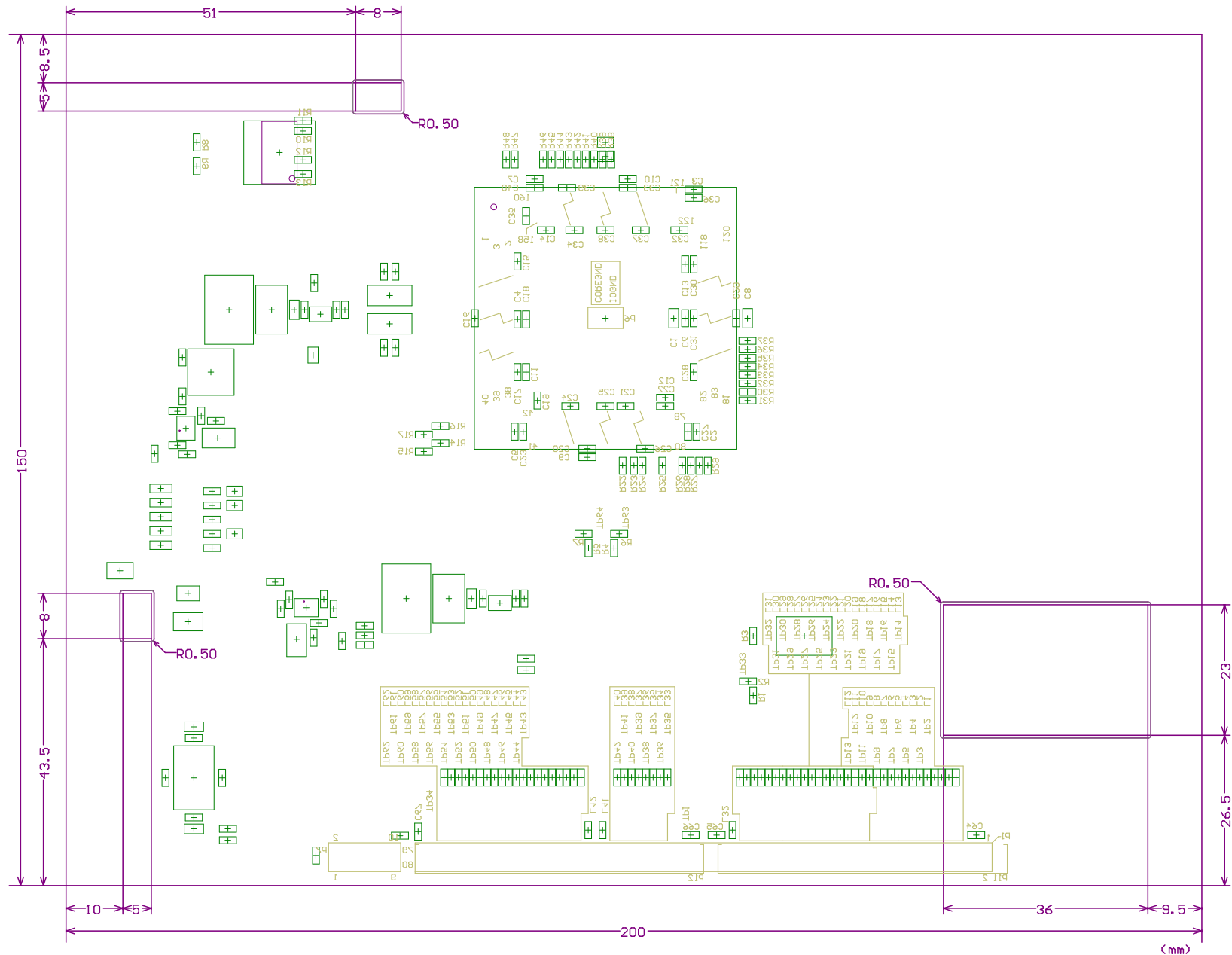


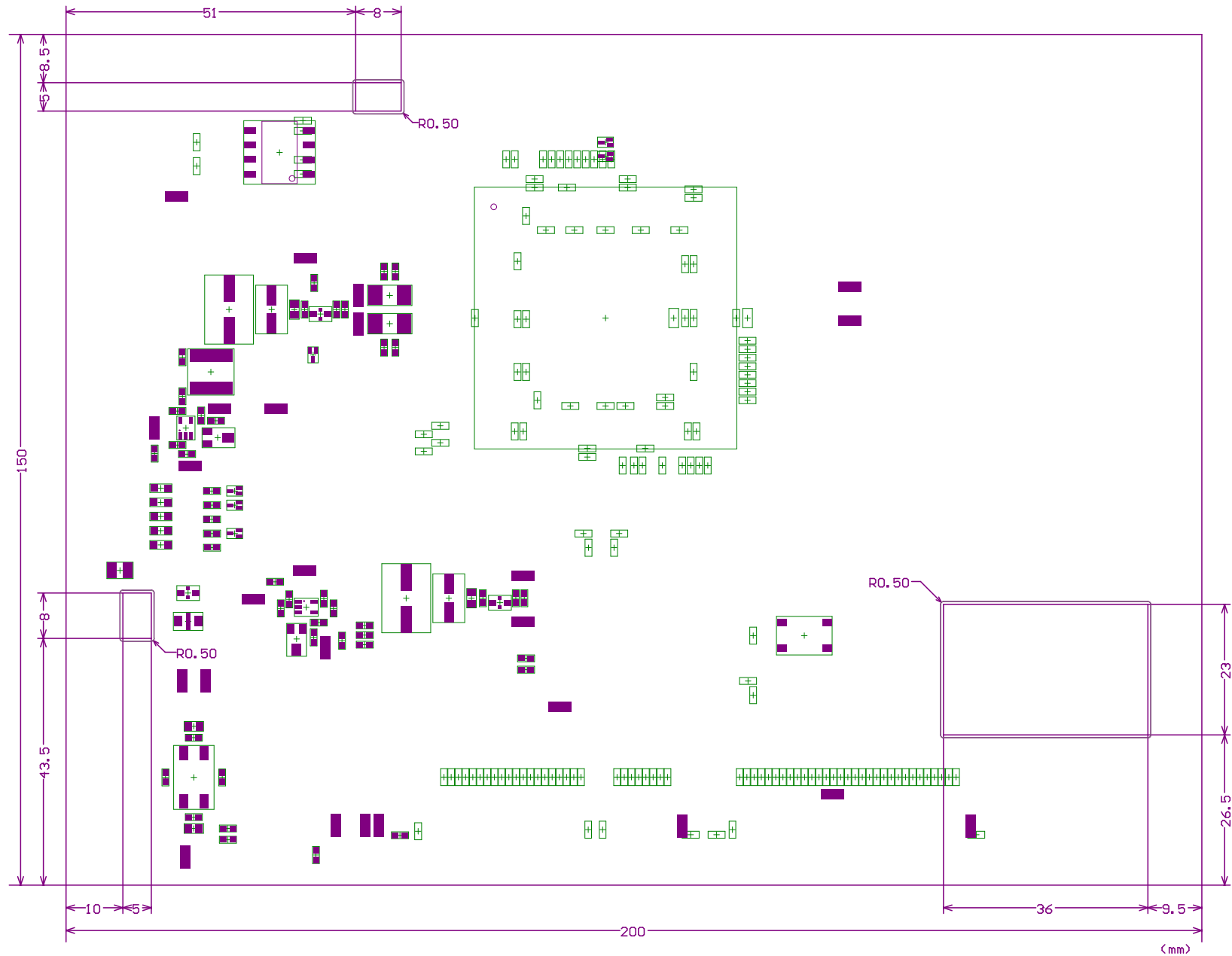


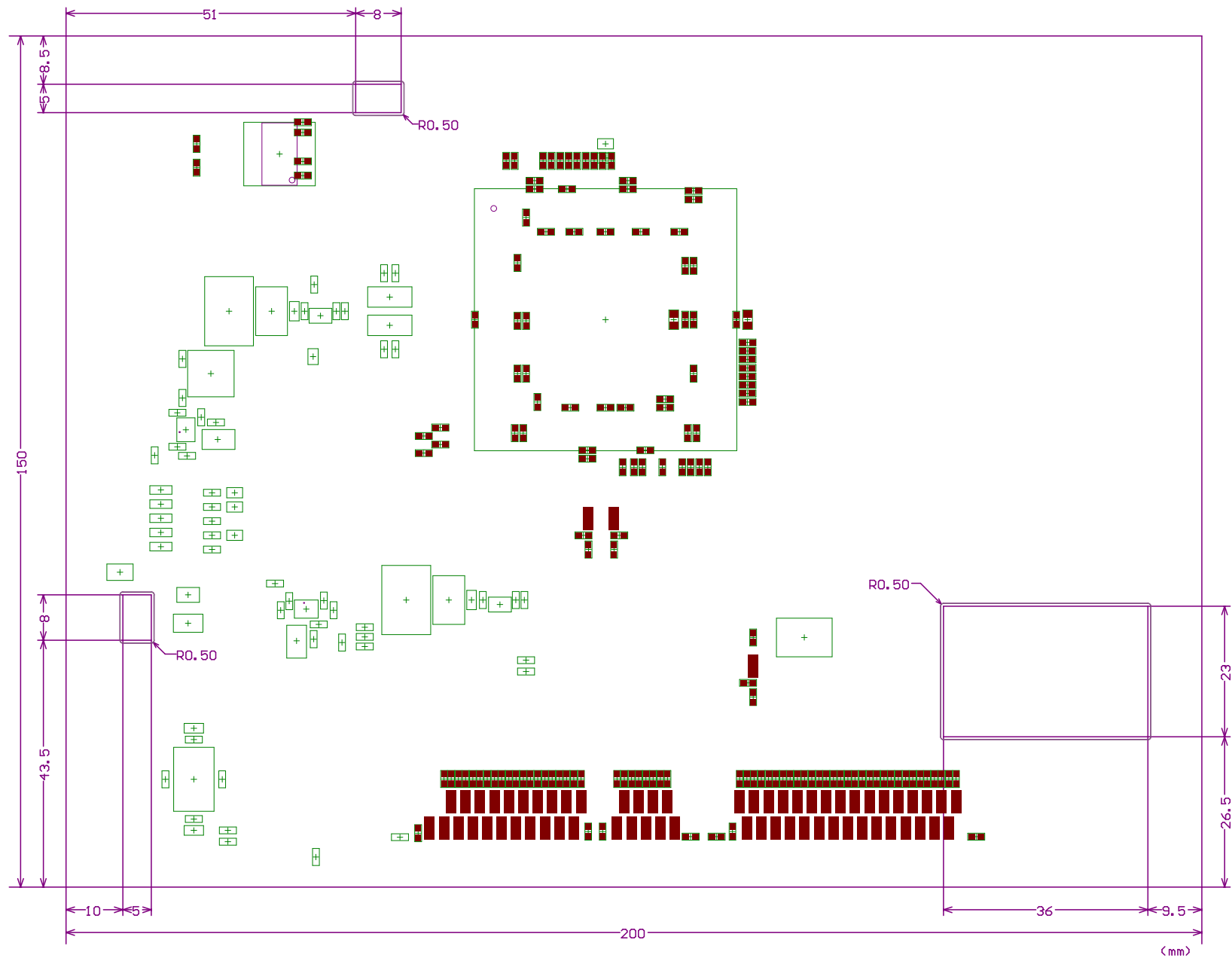


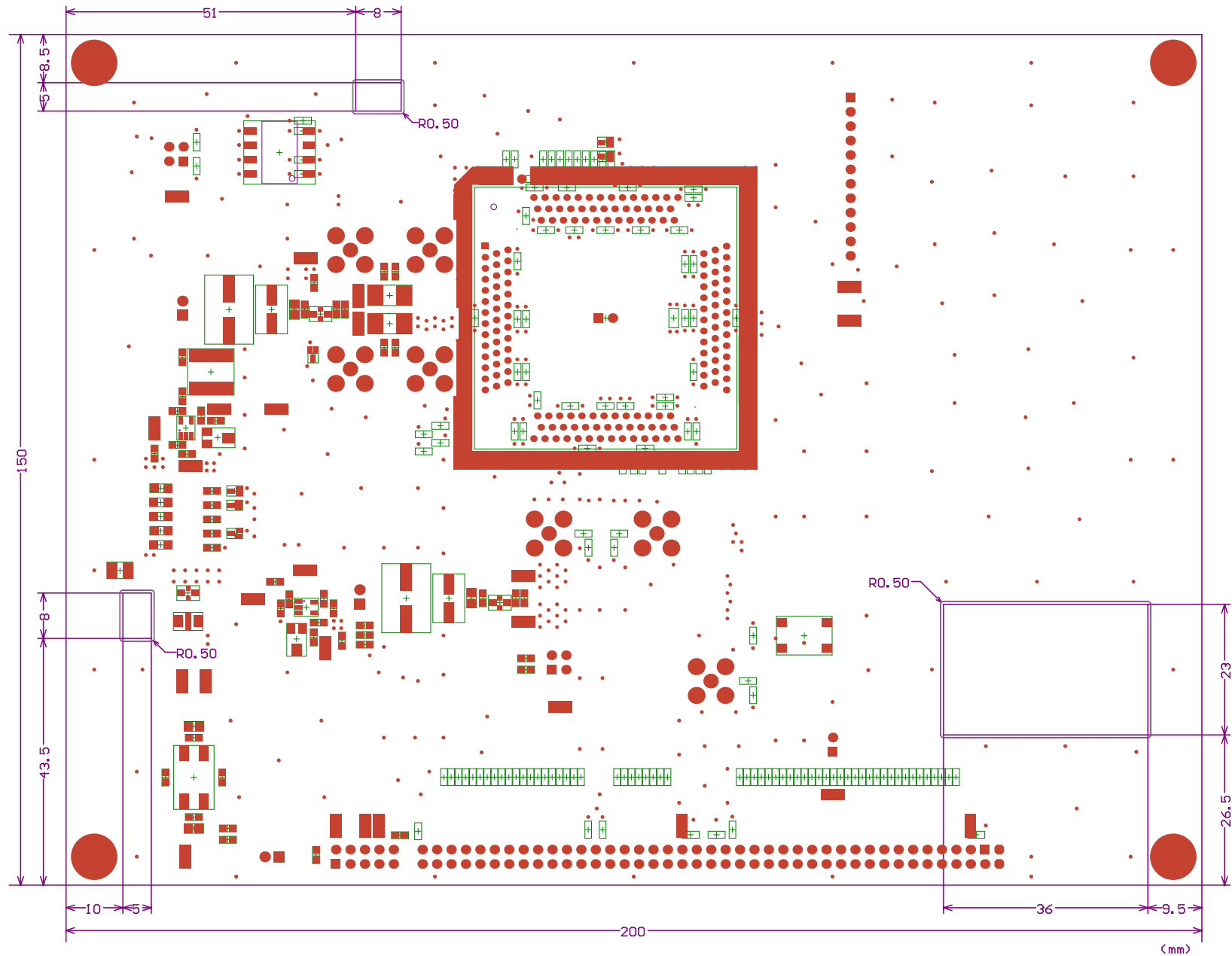


 $\langle mm \rangle$

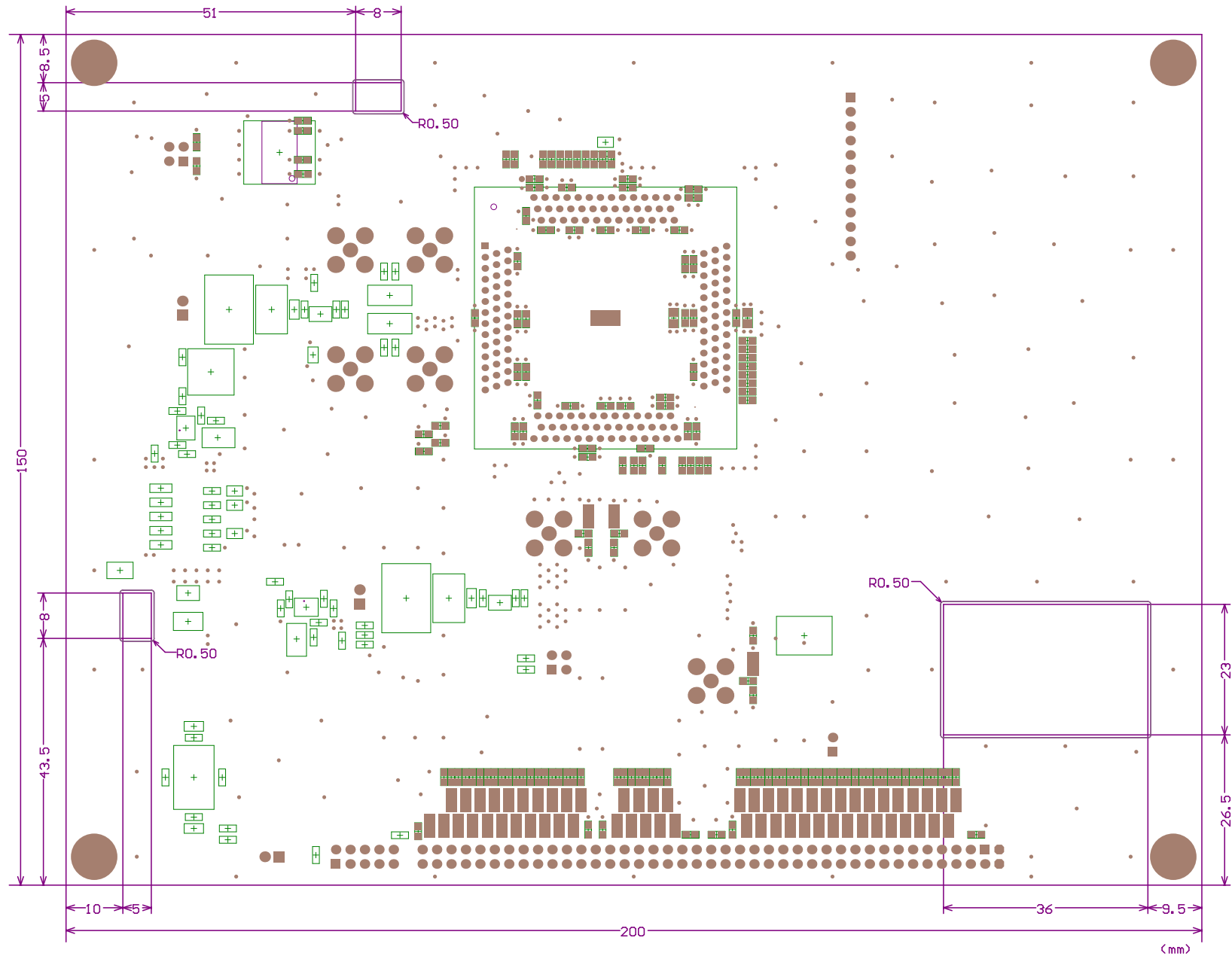


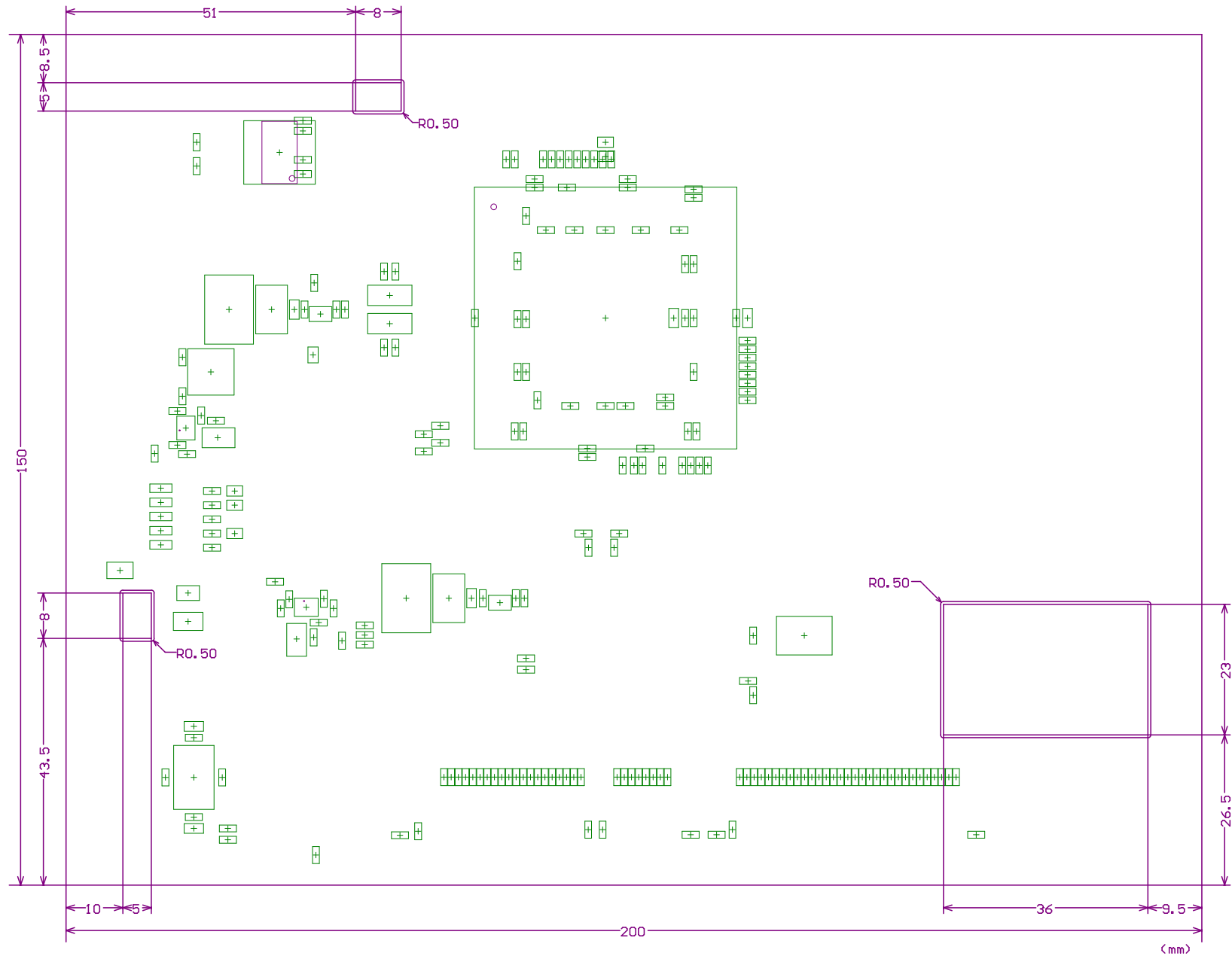


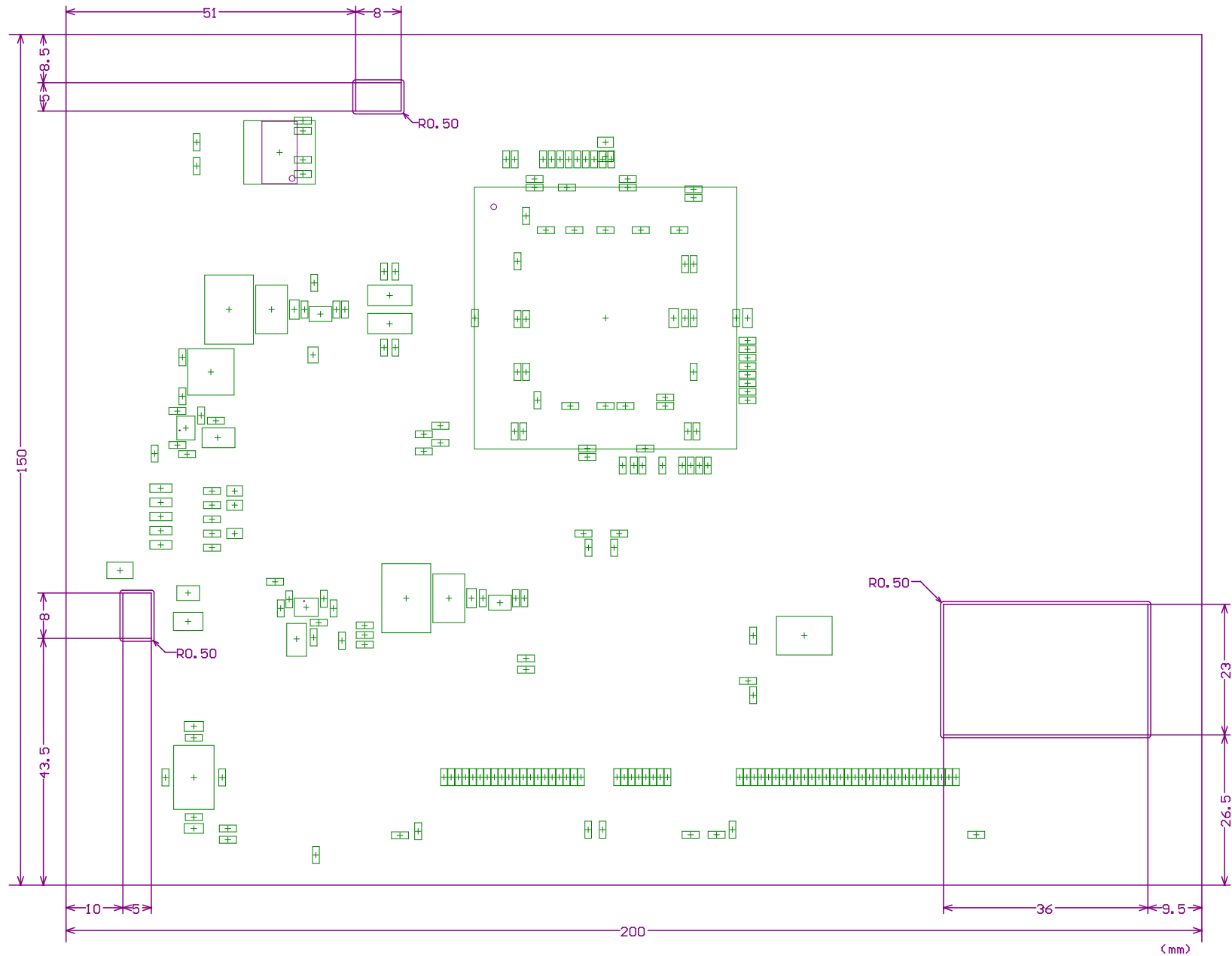


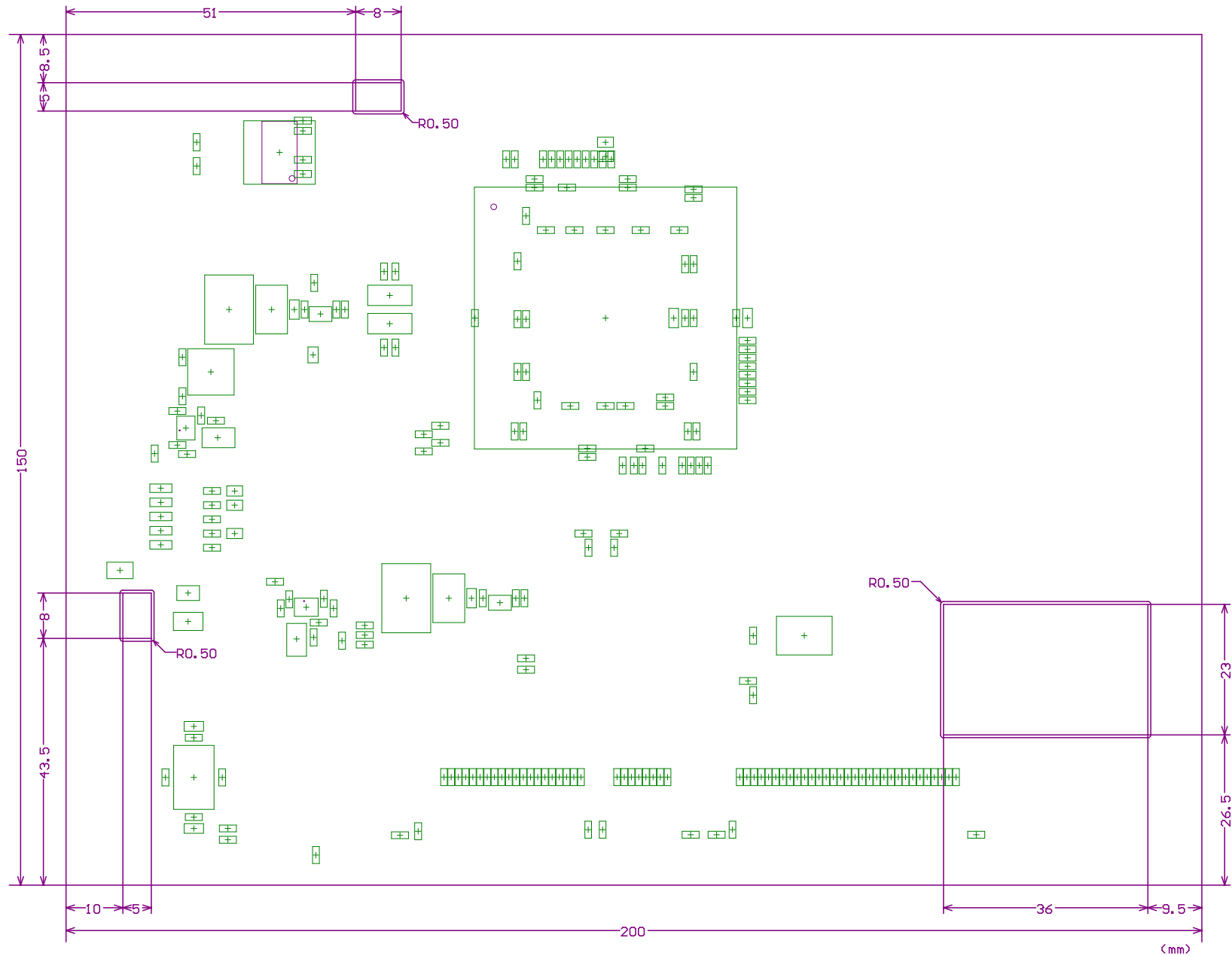


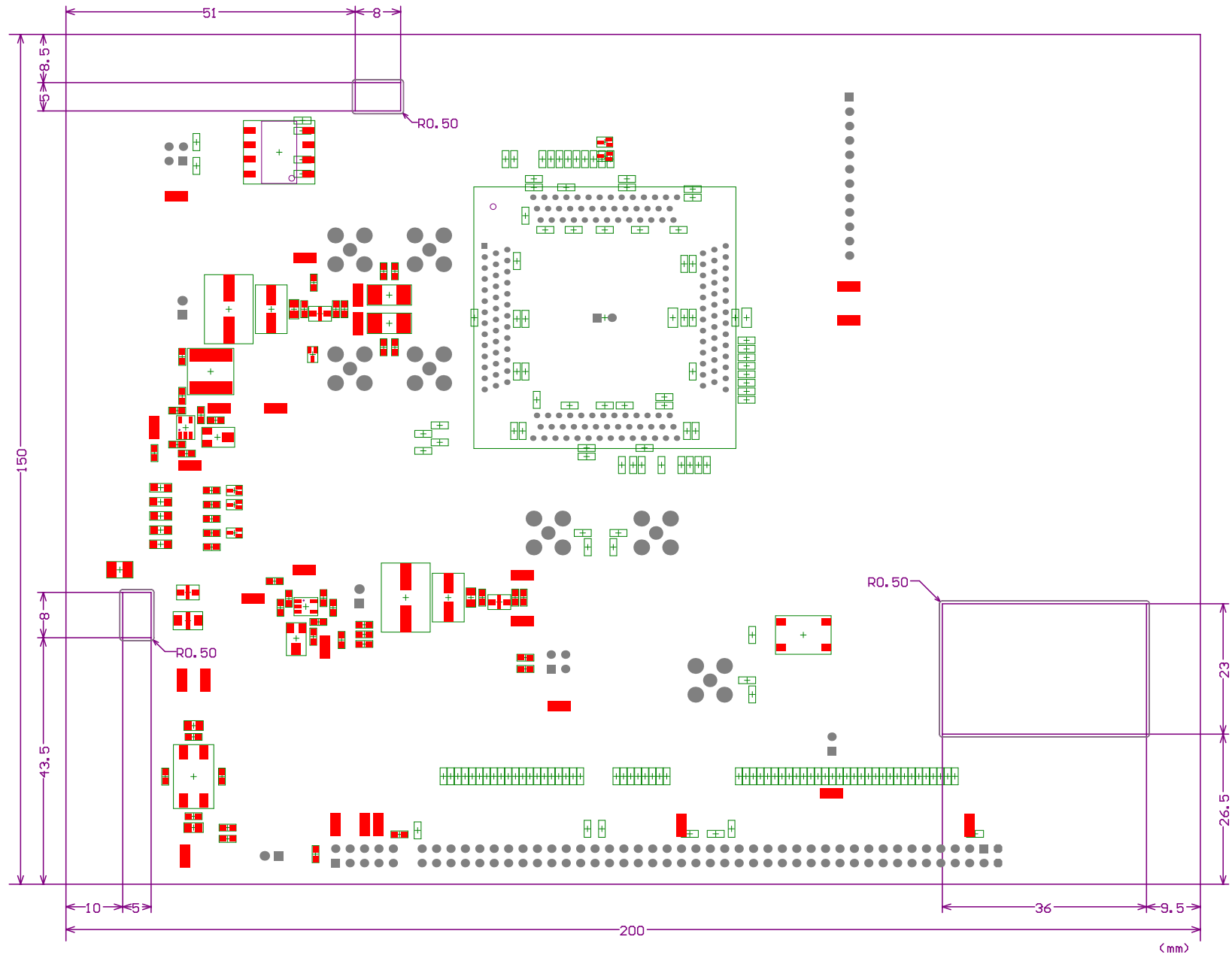


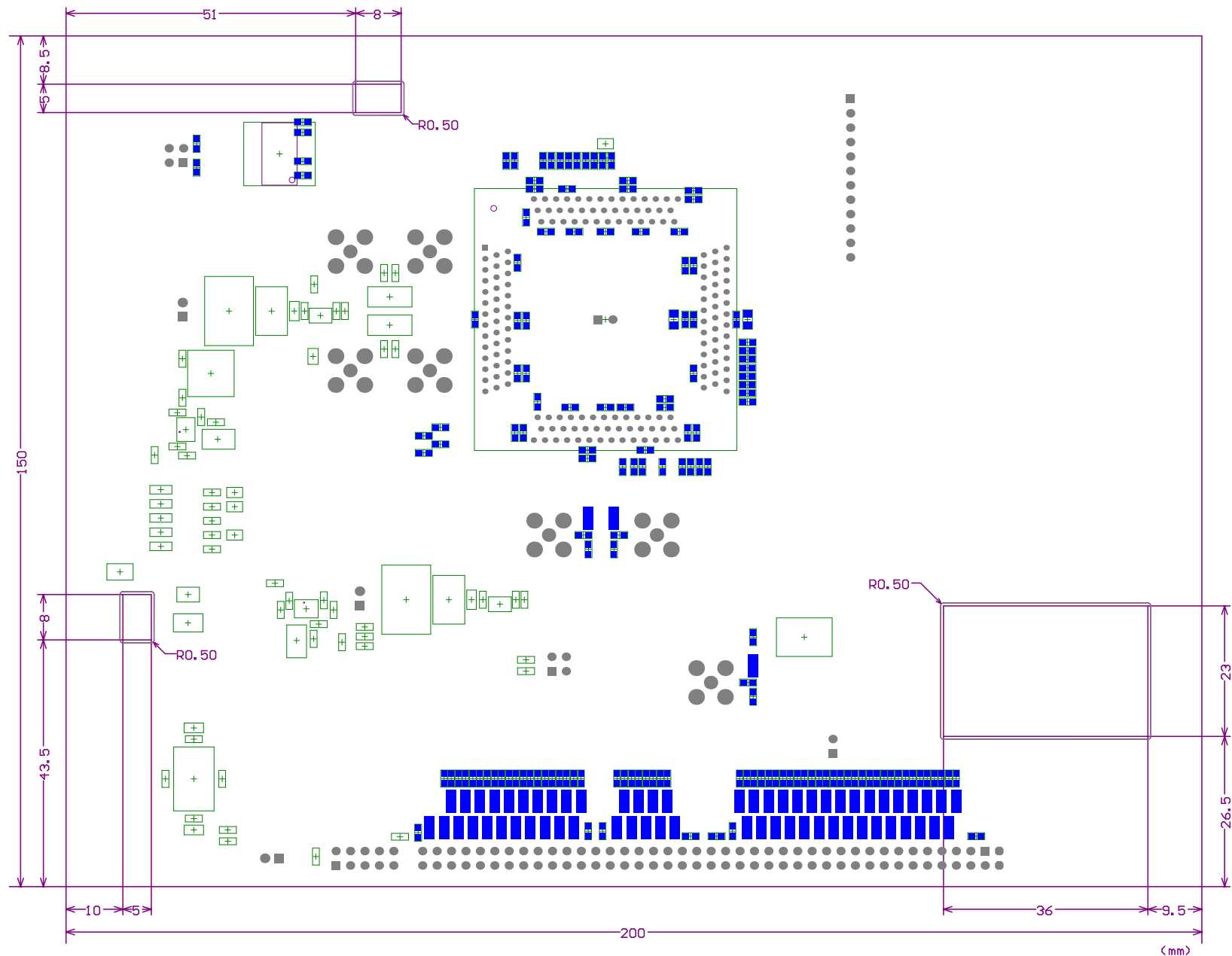


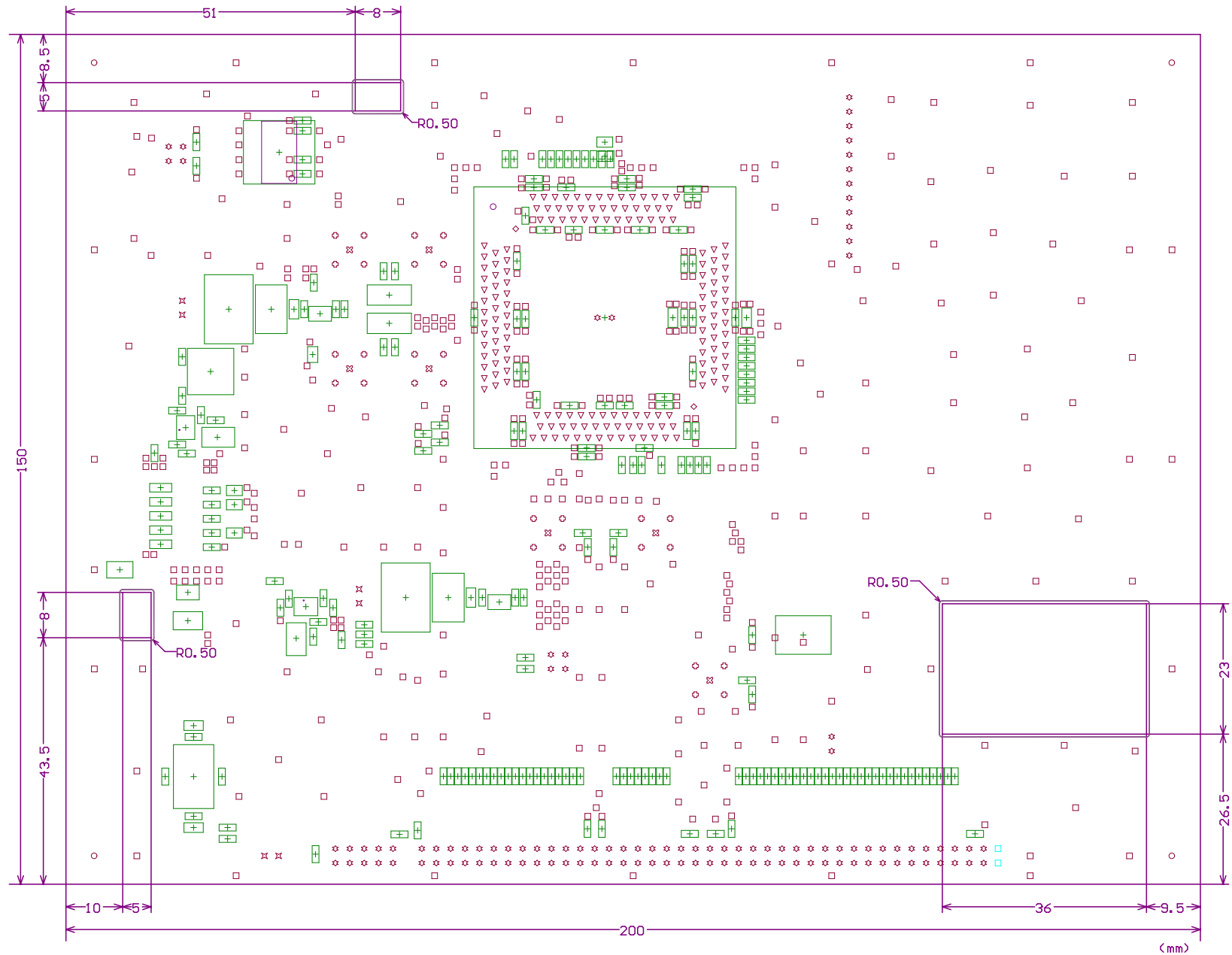


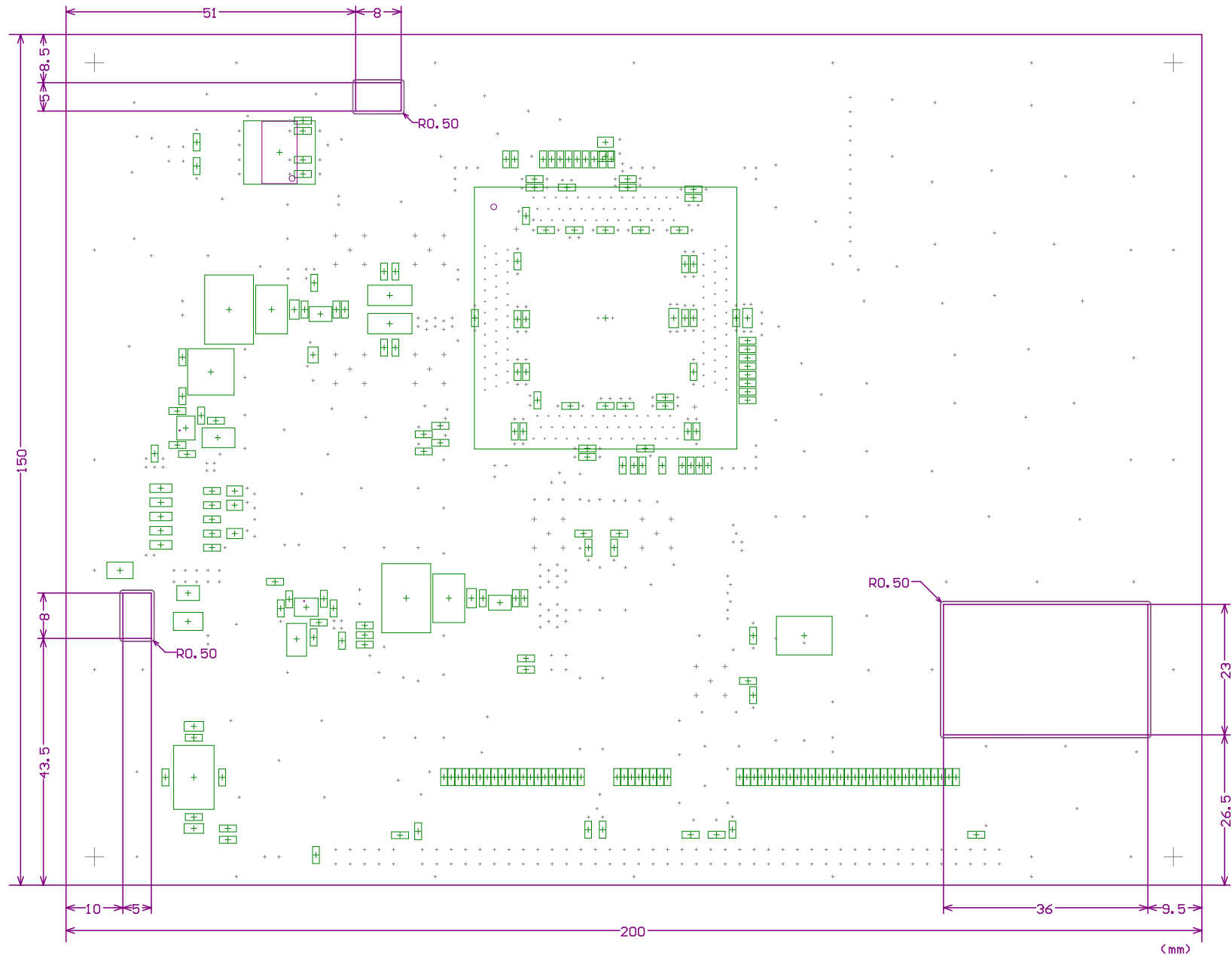




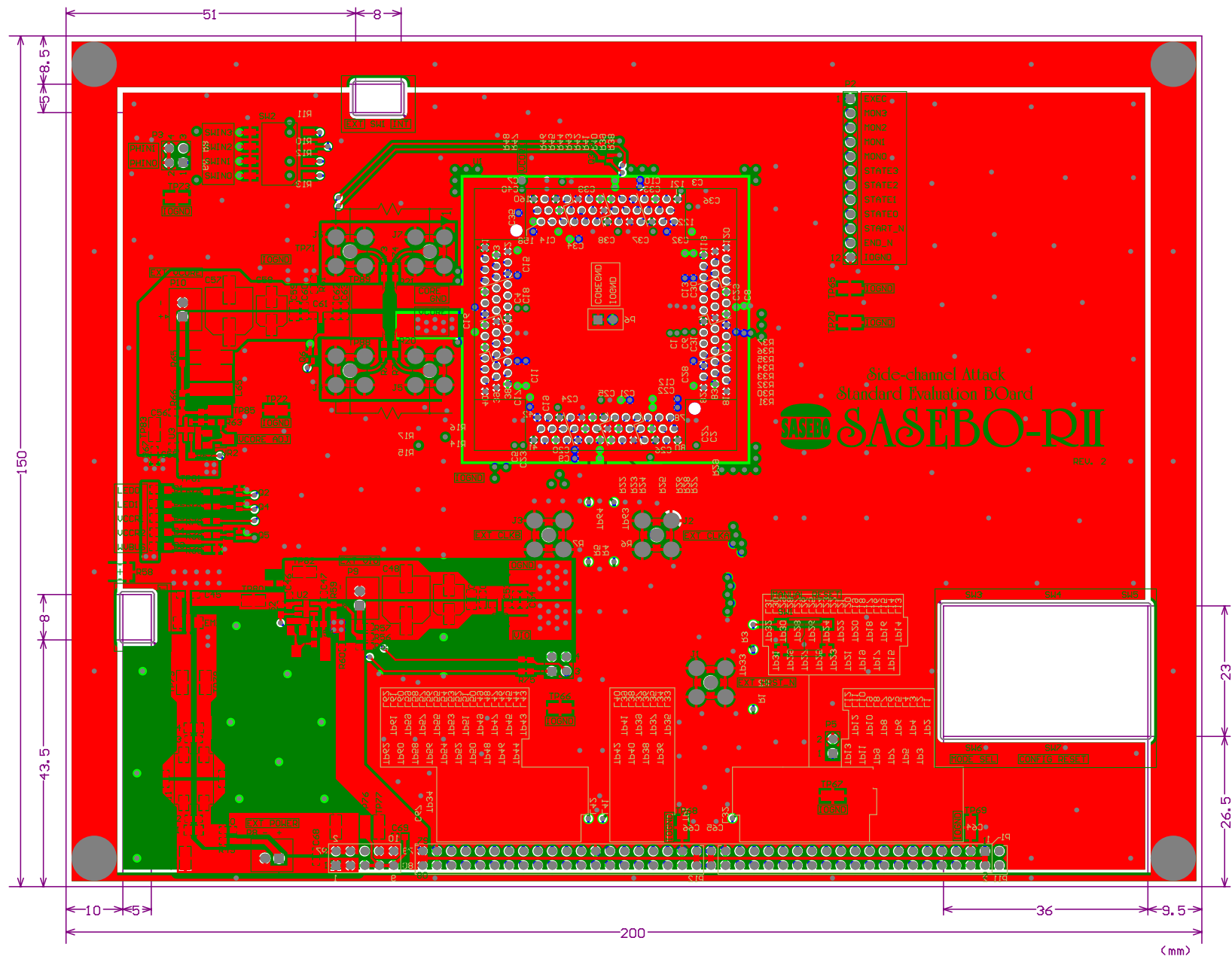












Designator	Manufacturer	PN	Pktn	Mount	Description	Value	Voltage Rated	Footprint	Quantity
C1	Murata	GRM21BE31A100KE1R	True	DNP	Capacitor	10u	10V	2012 Metric	1
C2, C3	Murata	GRM188B31E105KA7J	True	DNP	Capacitor	1u	25V	1608 Metric	2
C4, C5, C6, C7	Murata	GRM188B31H104K	True	DNP	Capacitor	0.1u	16V	1608 Metric	4
C8, C41, C44, C50, C59	Murata	GRM21BE31A100KE1R	True	P	Capacitor	10u	10V	2012 Metric	5
C9, C10, C46, C47, C51, C55, C56, C59	Murata	GRM188B31E105KA7J	True	P	Capacitor	1u	25V	1608 Metric	8
C11, C12, C13, C14, C42, C43, C53, C62, C64, C65, C66, C67, C68, C69	Murata	GRM188B31H104K	True	P	Capacitor	0.1u	50V	1608 Metric	14
C15, C16, C17, C19, C20, C21, C22, C26, C29, C30, C32, C33, C34, C35, C34, C35, C34, C35	Murata	GRM188B31H103K	True	P	Capacitor	0.01u	50V	1608 Metric	16
C16, C23, C24, C25, C26, C27, C31, C36, C37, C38, C39, C40	Murata	GRM188B31H103K	True	DNP	Capacitor	0.01u	50V	1608 Metric	12
C45, C52, C61	Murata	NFM21PC105	False	P	Feed-Through Capacitor	1u	16V	NFM21P	3
C48	Nichicon	RH50JB21MC N1GS	False	P	Polarized Capacitor	820u	6.3V	CAPPOL_5M D-8	1
C49, C58	United Chemicon	APX6E03W0A101ME1G	False	P	Polarized Capacitor	100u	6.3V	CAPPOL_5M D-5	2
C57	Nichicon	RHA0E102MC N1GS	False	P	Polarized Capacitor	1000u	2.5V	CAPPOL_5M D-8	1
D1, D2	OSRAM Opto	LG R971-KN-10-20-R18	False	DNP	LED			2012 METRIC LED	2
D3, D4, D5	OSRAM Opto	LG R971-KN-10-20-R18	False	P	LED			2012 METRIC LED	3
EM11	TDK	ACM90V-701-2PL-TL	False	P	Common Mode EMI Filter			ACM90V	1
EM12	Panasonic	ELKE-E333FA	False	P	LC EMI Filter			ELKE	1
J1, J2, J3	Telegartner	J01151A0931	False	DNP	SMA Jack			919-109J	3
J4, J5, J6, J7	Telegartner	J01151A0931	False	P	SMA Jack			919-109J	4
L1, L2, L3, L4, L5, L6, L7, L8, L9, L10, L11, L12, L13, L14, L15, L16, L17, L18, L19, L20, L21, L22, L23, L24, L25, L26, L27, L28, L29, L30, L31, L32, L33, L34, L35, L36, L37, L38, L39, L40, L41, L42, L43, L44, L45, L46, L47, L48, L49, L50, L51, L52, L53, L54, L55, L56, L57, L58, L59, L60, L61, L62	Murata	BLM188K221 SMD	False	DNP	Inductor			1608 Metric N	62
L63, L64	Murata	LCM21FN100 M79	False	DNP	Inductor			1608 Metric	2
L65	Taiyo Yuden	NRS8030T10 0M3J	False	P	Inductor	10u		NRS8030	1
P1			False	P	Header, 80-Pin			HDR2X40	1
P2			False	P	Header, 12-Pin			HDR1X12	1
P3, P4			False	DNP	Header, 2-Pin, Dual row			HDR2X2	2
P5			False	DNP	Header, 2-Pin			HDR1X2	1
P6			False	P	Header, 2-Pin			HDR1X2	1
P7			False	P	Header, 10-Pin			HDR2X5	1
P8, P9, P10	JST	B2B-XH-A	False	P	Connector, 2-Pin			B2B-XH-A	3
Q1, Q3	Rohm	DTA114YE	False	DNP	PNP Digital Transistor			SC-75	2
Q2, Q4	Rohm	DTC114YE	False	DNP	NPN Digital Transistor			SC-75	2
Q5, Q6	Rohm	DTC114YE	False	P	NPN Digital Transistor			SC-75	2
R1, R4, R5, R50, R56, R59, R66	KOA	RK73Z1JTTD	True	P	Resistor	0		1608 Metric	7
R2, R6, R7, R49, R51, R55, R57, R60, R61, R65, R67, R75, R76	KOA	RK73Z1JTTD	True	DNP	Resistor	0		1608 Metric	13
R3, R18, R19	KOA	RK73B1JTTD 102J	True	DNP	Resistor	1k		1608 Metric	3
R8, R9, R10, R11, R12, R13, R52, R62	KOA	RK73B1JTTD 103J	True	P	Resistor	10k		1608 Metric	8
R14, R15	KOA	RK73B1JTTD 473J	True	DNP	Resistor	47k		1608 Metric	2
R16, R17	KOA	RK73B1JTTD 473J	True	P	Resistor	47k		1608 Metric	2
R20	Vishay	GRW25121 RODKCEG	False	P	Resistor	1		6432 Metric	1
R21	Rohm	MR10100J000	False	P	Resistor	0		6432 Metric	1
R22, R23, R24, R25, R26, R27, R28, R29, R30, R31, R32, R33, R34, R35, R36, R37, R38, R39, R40, R41, R42, R43, R44, R45, R46, R47, R48	KOA	RK73B1JTTD 220J	True	P	Resistor	22		1608 Metric	27
R53	Rohm	MCR03EZPFX 1472	False	P	Resistor	14.7k 1%		1608 Metric	1
R54	Rohm	MCR03EZPFX 9092	False	P	Resistor	90.9k 1%		1608 Metric	1
R58			False	DNP	Resistor	0		3225 Metric	1
R63	Rohm	MCR03EZPFX 1002	False	P	Resistor	10k 1%		1608 Metric	1
R64	Rohm	MCR03EZPFX 1022	False	P	Resistor	16.2k 1%		1608 Metric	1
R68, R69, R70	KOA	RK73B1JTTD 102J	True	P	Resistor	1k		1608 Metric	3
R71, R72	Vishay	CRCW060349 R9RKEA	False	P	Resistor	49.9		1608 Metric	2
R73, R74	Vishay	CRCW060349 R9RKEA	False	DNP	Resistor	49.9		1608 Metric	2
SW1	Omon	A6S-4104H	False	DNP	Switch			B3S-1000	1
SW2			False	DNP	DIP Switch SPST 4-Positions			DIPSW-4	1
TP1, TP2, TP3, TP4, TP5, TP6, TP7, TP8, TP9, TP10, TP11, TP12, TP13, TP14, TP15, TP16, TP17, TP18, TP19, TP20, TP21, TP22, TP23, TP24, TP25, TP26, TP27, TP28, TP29, TP30, TP31, TP32, TP33, TP34, TP35, TP36, TP37, TP38, TP39, TP40, TP41, TP42, TP43, TP44, TP45, TP46, TP47, TP48, TP49, TP50, TP51, TP52, TP53, TP54, TP55, TP56, TP57, TP58, TP59, TP60, TP61, TP62, TP63, TP64, TP65, TP66, TP67, TP68, TP69, TP70, TP71, TP72, TP73, TP74, TP75, TP76, TP77, TP78	MAC8	HK-1-G	False	DNP	Test Pin			HK-1	89
U1	amplas	OTQ-160-0-65	False	P	SASEBO Crystal-Sil 160pin			OTQ-160-0.65-5	1
U2, U3	ADI	ADP123AUJZ	False	P	5.5V Input, 300mA Low Quiescent Current, CMOS Linear Regulator			SOT-23-5	2
VR1, VR2	Copal	ST32ETA103	False	P	Variable Resistor	10k		ST-32EA	2



